

## Who am I?

- \* EE, University of Rochester
- \* HP Calculators (HP-71B, HP-18/28)
- \* HP Cardiology (Pawewriter XL ECG, CodeMaster Defibrillator)
- \* Instromedix (LifeSigns Home Health)
- \* Medtronic Physio-Control (Dir. Adv. Dev.)
- \* Code Blue Communications (Bluetooth modules, consulting)
- \* connectBlue (Sales and Marketing)
- \* Code Blue Consulting & Coconut Manor (BTLE products)
- \* Cinq Cellars winery (gratuitous plug)

Experience: Consumer, Type I, II, III devices, 510(k), PMA, PMAs

7-Mar-2018

[www.consultcodeblue.com](http://www.consultcodeblue.com) r.3

1

## What is a Medical Device?

- A Medical Device is "... an instrument, apparatus, implement, machine, contrivance, implant, in vitro reagent.....", that is "...intended for use in the diagnosis of disease or other conditions, or in the cure, mitigation, treatment, or prevention of disease, in man..." or "...intended to affect the structure or any function of the body of man..." (from the US FDA)

7-Mar-2018

[www.consultcodeblue.com](http://www.consultcodeblue.com) r.3

2

## All medical devices *shall* be connected – Why?

- Connectivity
  - Electronic Health Record (EHR)
  - Charge capture (billing)
  - Big Data analytics
- Wireless is replacing wired connections
  - Mobility/safety
  - Data collection
- Telemedicine
  - Remote consultation & review (*photo*)
  - Home Health
  - Aging in Place
- Health and Fitness



7-Mar-2018

www.consultcodeblue.com r.3

3

## All medical devices *shall* be connected – Where?

- Classic answers:
  - Hospital
  - EMS
  - Home
- Real answers:
  - Starbucks
  - 37,000 feet
  - Stuck on I-5
  - In the bathroom
  - In the elevator
- Real environments require creative solutions for connectivity



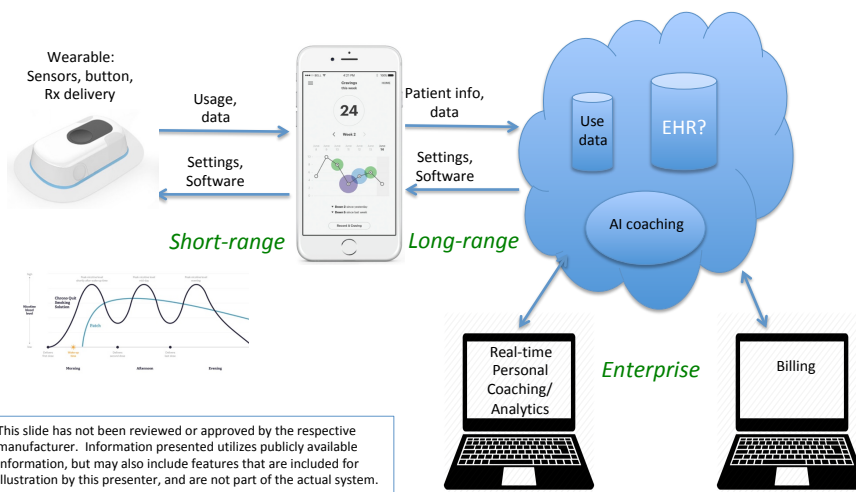
7-Mar-2018

www.consultcodeblue.com r.3

4

## Example ***system***: Personalized Medicine

Adapted from Chrono Therapeutics smoking cessation solution (investigational)



## How real is this? Hacking is evolving and accelerating!

- Early public disclosure: "Pacemakers and Implantable Cardiac Defibrillators: Software Radio Attacks and Zero-Power Defenses" - 2008 *IEEE Symposium on Security and Privacy*
- 2015 - Hospira infusion pumps: <https://www.wired.com/2015/06/hackers-can-send-fatal-doses-hospital-drug-pumps/>
- "Los Angeles Hospital Pays Hackers \$17,000 After Attack" – February 2016
- Muddy Waters & St Jude Medical: implant vulnerabilities and short-sale profit – August 2016
- "J&J warns diabetic patients: Insulin pump vulnerable to hacking" – October, 2016
- Numerous hospital ransomware attacks - 2018

7-Mar-2018

[www.consultcodeblue.com](http://www.consultcodeblue.com) r.3

6

## Cybersecurity: why do we care?

- Patient lives are at stake, both directly and indirectly!
- HIPAA requirements – medical record portability & privacy
  - Protects you from unauthorized use of your medical information
  - Eg: employer discriminating for a medical condition
- FDA requirements
  - OTS software guidance
  - Premarket submission guidance
  - Postmarket management
- Company reputation and value is at stake
  - St Jude Medical/Muddy Waters
- Attack-of-the-month
  - Ransomware
  - Blueborne
  - Krack
  - Meltdown & Spectre

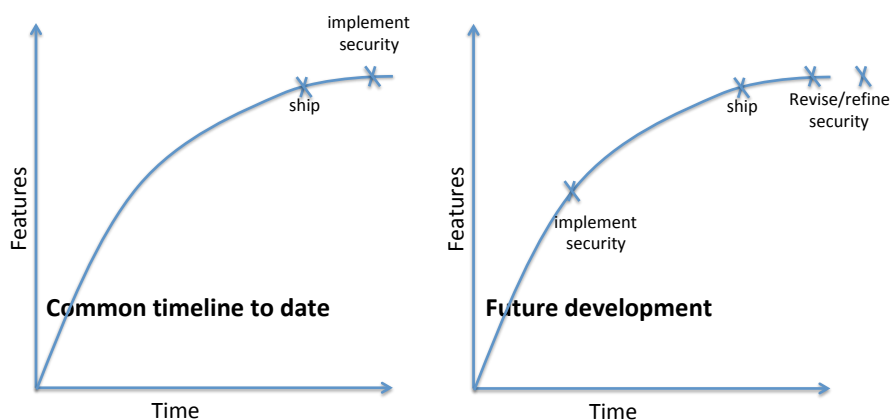


7-Mar-2018

www.consultcodeblue.com r.3

7

## Why are we seeing issues? Development lifecycle & cybersecurity



7-Mar-2018

www.consultcodeblue.com r.3

8

## Contact info

- Bill Saltzstein  
Code Blue Consulting  
billsalt@consultcodeblue.com  
www.consultcodeblue.com  
425-442-5854
- Thank you!

7-Mar-2018

www.consultcodeblue.com r.3

9